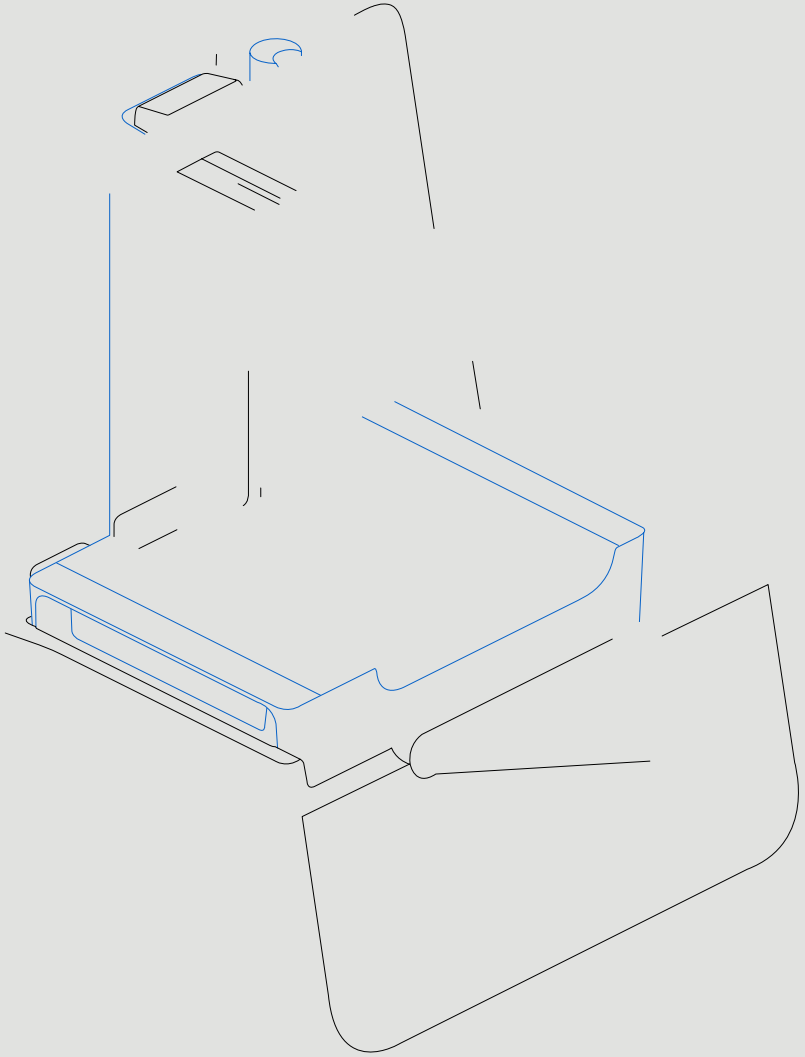


# Ma a | Form 3B+





**formlabs**



7.1	Cercetare Diagnostic	26
7.2	Performanța Facultății	26
7.3	Cercetare Afecțiune	26
7.4	Trabucuri	27
7.5	Diserbia de Rea	29

8.1	Guida de Cercetare Diagnostică	30
-----	--------------------------------	----









1.2.2

**S** f a . . / / - f- /# a a  
**E (EN)** f a . . / / - f- / /  
**E (DE)** f a . . / / - f- / /  
**E (FR)** f a . . /f/ / - f- / /



2.2

	▲ +	▲ +	▲ +	▲ +
	57 51 69 c (22.5 20 27 i )	24 20 8 c (9.5 8 3 i )	35 30 8 c (14 11.8 3.3 i )	18 17 8 c (7. 6.75 3 i )
	22.7 g (50 b)	1.5 g (3.3 b)	1.4 g (3.1 b)	0.67 g (1.5 b)
	17.5 g (38.6 b)	1.35-1.6 g (3-3.5 b)	0.8 g (1.8 b)	0.65 g (1.4 b)

	L, F, ce Se e, i h, g a h (LFS)
	Wid h: 40 c (15.5 i ) De h: 53 c (21 i ) Heigh: 78 c (30.5 i )
	17.2 g (37.9 b)
	A, -hea, 35 C (95 F)
	Ai hea ed c, i cha be
	100 240 V 2.5 A 50/60 H 220 W
	1 Ligh R, c s i g U i EN 60825-1:2014 c e i ed C s 1 L a e R, d_c 405 i, e a e 250 W a e
	85 i, s (0.0033 i )
	The F, 3B+ s a C s 1 L a e c, d_c. Acc s ib e. adia i, s i hi C s 1 i s.
	Wi-Fi, E h e, a d USB
	RJ-45 E h e (10BASE-T/100BASE-TX/1000BASE-T) LAN P, s C, e c i h a E h e e cab e (i c_ded): i i _ Ca 5, s Ca 5 e, Ca 6 i, 1000BASE-T.
	R, r, c, : IEEE 802.11 b/g/ F e _ e c : 2.4 GH, 5 GH S _ f _ ed s e c s i : WPA/WPA2
	D, s, e l c eed 70 dB(A).
	I e ac i v e, _ c h c e e
	A, a ad
	145 145 185 5.7 5.7 7.3 i
	A, -Ge e a ad Re, a b e

2.3



E

2.4

$\sigma$

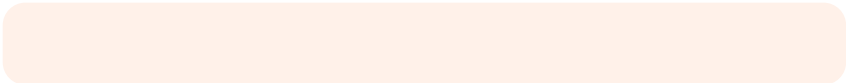
$a_{\sigma}$

### 3. Safety

Read and understand this manual and its safety instructions before using the Form 3B+. Failure to do so can result in serious injury or death.

See the registration procedure, and the safety instructions, before using the Form 3B+. The instructions, safety instructions, and safety instructions are provided in the following sections:

---







4.



4.1

A a } a S  
Ch, e a a be, e e f, a ce, i s a a d, e a e he F, 3B+. Ch, e a, ca i,  
e e a a e f, a achi e f, i g ha ge e a e d s f, a s s ch, d f, e a  
f, i g e i e. R e e r e he f, i g i i d e s i, f, he c, r e i e  
a c c e s s :

D : 40 c (15.5 i)      D : 53 c (21 i)      H : 78 c (30.5 i)

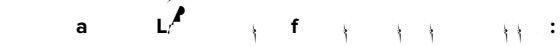
A, addi i, a a ce f, a c c e s s i e s, c h e F, 3B+ F i h K i, F, W e h, a d  
F, C s e.

4.2

F 3B+  
D s i g b, i g, i s e c he F, 3B+ f, a da age, s i g i e s. l he c a e, f da age  
f, s i g i e s, c, a c F, a s f, he c e i e d e r i c e c, r i d e.

- F 3B+:
1. O e he b, f, he, . l f he b, h a s i d e g a e, f, d d, he s i d e, f he b, f.
  2. U e he c, r i d e d h a d e, i f he c i e, i s c a i e c a, r, f he b, f.
  3. R e, r e he c i e f, he c a i e c a a d e he c i e i s f, a c e.
  4. R e, r e a a d d i i, a c a i g a d a c a g i g f, he, s i d e, f he c i e.

Remove all packaging material and release the Light Processing Unit (LPU) housing before connecting power.



1. O e he c i e c, r e.
2. R e a d a c, e-1.24-1, (B)F-1.24-1, (B)T'2K4 Tf0 Tc 0 -1.437 Td(1)T/S a Ac\_a Te EFF0009 c, a 12.



is required for warranty service.

### 4.3 I a F 3B+

#### 4.3.1 C Ca.

Connect the printer to the computer via USB, Wi-Fi, Ethernet, or mobile network. For details, see the user manual. For details, see the user manual.

#### 4.3.2 L



It is important that the printer sits level so resin does not overflow from the tank during printing. All four feet must rest on a solid surface to ensure optimal print accuracy.

The printer must be level before starting to print. If the printer is not level, the print quality will be affected.

#### F 3B+:

1. Check the printer level. If necessary, adjust the feet. The printer must be level on all four feet.
2. The printer must be level on all four feet.
3. The printer must be level on all four feet.
4. Raise the printer level. The printer must be level on all four feet.



Adjust the printer level.

5. Adjust the feet of the printer.

#### 4.3.3 I a a M



Spill hazard. Resin may spill over the tank walls if the resin tank tilts more than 5-10°. Hold the resin tank level with two hands. To inspect and clean the underside of the tank, empty the resin tank and/or take care to avoid spilling resin outside the tank.



Resin may cause skin irritation or an allergic skin reaction. Wear gloves when handling

liquid resin or resin-coated surfaces. Wash skin with plenty of soap and water.

- a a :**
1. O e h e i e c e .
  2. R e h e i d f h e a c e .
  3. R e a c a g i g a e i a f h e a .
  4. L i f h e i a i h e h a d e a c h i d e .

Avoid contaminating the underside of the resin tank with fingerprints or liquid resin.

5. A i g h e i a i d e a s i h h e e f a d i g h a c i e a b .
6. P s h h e i d e h a d e - A c a T T 1.24 0 T d ( A i g h e ) T i a i d e a s i h a d T d ( A i g h e ) T



4.4.1 **C** **S B**

Use the included USB cable to connect the printer to the computer.

1. Plug the end of the USB cable into the back of the Form 3B+.
2. Connect the other end of the cable to the USB port on the computer.

4.4.2 **C** **E**

The printer is equipped with a RJ-45 Ethernet (10BASE-T/100BASE-TX/1000BASE-T) LAN port. Connect a LAN Ethernet cable (included) to the LAN port (labeled: 10/100/1000BASE-T).

1. Plug the end of the Ethernet cable into the back of the Form 3B+.
2. Connect the other end of the cable to the LAN port on the network.

4.4.3 **C** **W-F**

The Form 3B+ built-in Wi-Fi (IEEE 802.11 b/g/n) supports WPA/WPA2 security. Use the Form 3B+ wireless network card to connect to the Wi-Fi network.

When connected, a active Ethernet network card, the Form 3B+ can be configured with a static IP address.

To connect the Wi-Fi network to a IP card, go to:

1. With a wireless Ethernet network card, the Form 3B+ will be connected to the Wi-Fi network.
  - a. Wi-Fi network, a Wi-Fi, the network card is connected to the printer.
  - b. Form Ethernet network card, the Form 3B+ will be connected to the Wi-Fi network.
2. Turn on the Main Power Switch.
3. In the printer's main menu, select: Setup > Network > Default Gateway and Network Name.

4.5 **a** **F 3B+**

Refer to the Technical Specifications for details on the dimensions. Keep the accessories in the original packaging for shipping.

1. Resin container, resin, and resin.
1. Resin container, resin, and resin.
1. Resin container, resin, and resin.



NOTICE

Do not ship with resin inside the printer. Resin left inside the Form 3B+ can damage the printer in transit, which may lead to additional fees or void the warranty.

**a** **a** **F 3B+:**

1. A resin container, the resin container, and resin container for the Form 3B+ resin.
2. Wi-Fi network card, the resin container, the resin container, the resin container, the resin container.
3. Resin container, the resin container.
4. Resin container, the resin container, the resin container, the resin container.



NOTICE

When shipping a printer to Formlabs for service, the build platform, resin tank, power and USB cables, and other accessories should not be shipped and will not be returned after service. The printer's original packaging is required for warranty service. Contact

**Part 3B:**

1. If the carrier is unable to deliver the goods, the carrier shall be liable to the shipper for the cost of the goods and the cost of the return freight.
2. The carrier shall be liable for the goods if:
  - a. The carrier is negligent in the handling of the goods.
  - b. The carrier is negligent in the stowage, loading, discharge, or unloading of the goods.
  - c. The carrier is negligent in the care of the goods while they are in the custody of the carrier.
  - d. The carrier is negligent in the discharge of the goods.
  - e. The carrier is negligent in the delivery of the goods.
  - f. The carrier is negligent in the receipt of the goods.
  - g. The carrier is negligent in the receipt of the goods.
3. The carrier shall be liable for the goods if the carrier is negligent in the handling of the goods.
- 4.

5.



F 3B+

5.1

a a E

The average sea level rise is 64.82 F (18.28 C). For a rising,



IPA is flammable. Keep containers closed, and keep out of the reach of children.

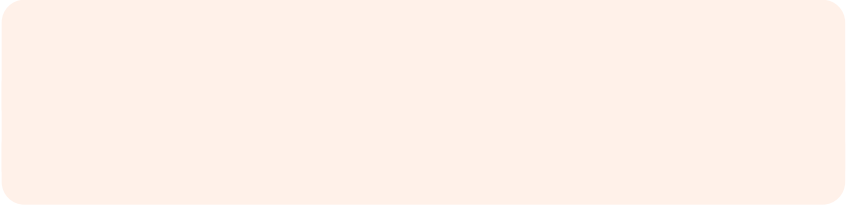
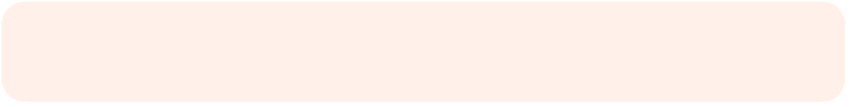
4. P<sub>2</sub>-C<sub>2</sub>e: The F<sub>2</sub>-C<sub>2</sub>e, el<sub>2</sub> se<sub>2</sub> i ed a<sub>2</sub>, igh a d hea<sub>2</sub>, s abii e he a<sub>2</sub>  
f<sub>2</sub> e f<sub>2</sub> a ce.
5. P<sub>2</sub>-R<sub>2</sub>o<sub>2</sub>: Re<sub>2</sub>es<sub>2</sub> l<sub>2</sub> s<sub>2</sub>, he<sub>2</sub> s<sub>2</sub>es a di g, s<sub>2</sub> i i g, f<sub>2</sub> ai i g, i s<sub>2</sub>re<sub>2</sub>  
s<sub>2</sub>e ai, f<sub>2</sub> s<sub>2</sub>e, he e<sub>2</sub>i e<sub>2</sub>, s<sub>2</sub>eae<sub>2</sub> s<sub>2</sub> f<sub>2</sub>, s<sub>2</sub>i ed a<sub>2</sub>.

In an emergency involving resin, always refer to the Safety Data Sheet (SDS) and/or seek help from a medical professional.

When handling IPA, always consult the Safety Data Sheet (SDS) for the IPA to determine the appropriate first aid. Handle IPA in a well-ventilated area. Keep away from heat, sparks, open flames, and hot surfaces. Do not breathe vapors.



6.



6.2

I a B

6.2.1

I B a

The biere are caed, he deside, f he ca idge. Th e ib ea eg a e i d e i g. Re i, f he, e i g i he ce e, f he biere are he he ca idge d e e a s ee e he re, e.

6.2.2

I a I

See 6.5.2 Maintain the Resin Tank.

6.3

M I a Ma a a

6.3.1

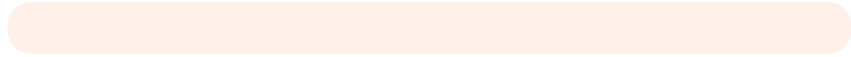
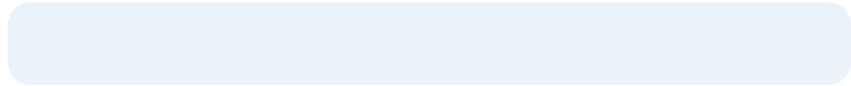
IDC a a Ca

ID (ide i cai, ) chi s, e i a s a d e i ca idge de ec, ac, a d a ch he. e i e i he a i h he c, e e i ca idge. The ID chi s, he deside, f each a f a e a d, he b, f he ca idge ea he biere.

Re, ec the ID chi s, he a ca ie, he a s i g ges, a d he ca idge i g ges d, c, a i ai, f da age. C e d e i f c, a i ai, e e s he c i e f, e, e ide i f i g a ca idge f e i a d s i g i e i, f s e. A, ide i f i g he ca idge ID chi, he e i a ID chi, he a ca ie, a d he a s i g ges, i id e i.

6.3.2

C a IDC S F





6.5

**Ma a**

F de aied g\_ida ce a d... a ce... ea ch, .f a. . .  
 Mai e a ce ... ha be d, e acc... di g, he f, i g a :

U da e he ... ae	Whe Ref... i dica... ae ... ae... ... ai abe	6.5.1
Re ace he... i a	Re ace he ea, he begis, ec ... ai	6.5.2
Re ace he... i ca... idge	Whe he ca... idge... e, af... 1 ie, f... i i g	6.5.4
Fi e he... i	Whe ... ca ... a ... ee a ic... i he a	6.5.3

6.5.1

**Ma F 3B+ F a**

F... ab... eg... a ... da ed... ae, b... a di ... ref... ci... ai. Re vie  
 he Ref... a d... ae... ee... e, ea ... e ab... he i ... e ... ha c, e  
 i heach... s... e... e.

6.5.2

**Ma a**

Spill hazard. Resin may spill over the tank walls if the resin tank tilts more than 5-10°. Hold resin taspill 0.00

Debit c, a i ai, i he.oi:

See 6.5.3 Filter the Resin.

Cea, debi f ee.oi he s ar, id si fai s e, hich a da age he a .  
Se ed ig e e i he.oi: Roi ig e ca s e e, he . T, s e e he  
f e s f ci, s ide he a . , , agai s he s e, e e ed ig e .  
T, cea he de ide, f he :

1. A a a a , f cea IPA , a PEC\*PAD.

2. Wi e he s face, f he s e, e c, a i ai, s oi .

T, cea he Roi Ta fa e e ei s:

3. Ge a a e , e , cea s ei f , he e ei s, f he a fa e .

4. Kee he ide, f he a cea a d fee, f oi .

5. Av id, oi , he de ide, f he , beca e he c, a i ai, a s oi si  
fai s a d/ da age , he, e h, de .

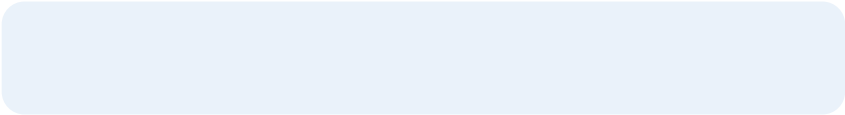
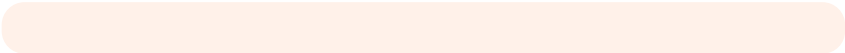
a

7.

F. de ai ed g\_ ida ce a d\_ a\_ a\_ a\_ ce\_ ea ch\_ . f\_ a\_ . . .

7.1

C D.a L  
The F. 3B+ ai ais diag\_ ic\_ ,\_ ,\_ ,\_ ide de ai ed i f. ai\_ ab\_ \_ he\_ i\_ e\_



- e. Lif he c<sub>5</sub> ed. ɔi ɹ̥, f hɛ. ɔi a ...
1. If he a ɹ̥, ca ɹ̥, h, d he c<sub>5</sub> ed. ɔi :
  2. A ach he ɹ̥, a ɹ̥, f he a ɹ̥, he b, ɹ̥ a .
  3. S\_ee e he c<sub>5</sub> ed. ɔi bē ee he ɹ̥, e d .
- f. Rɔ he c<sub>5</sub> ed. ɔi ɹ̥, he a e ɹ̥, e .
5. Dɪ ɹ̥, e, f c<sub>5</sub> ed. ɔi . See 8.1.1 Disposal of resin.
6. Cea he a ɹ̥, a d ɹ̥. a ea .
1. A cea IPA ɹ̥, a cea a e ɹ̥, e .
2. Wi e he ɹ̥, face, f he a ɹ̥, e ɹ̥, e. ɔi .
3. A ɹ̥, he a ɹ̥, ai d .
1. Rɔ he a ɹ̥, i he Fɹ̥. Wɔ h bɔ e .
2. Se Fɹ̥. Wɔ h ɹ̥, cea fɹ̥. 5 i ɹ̥. l e e e he i e fɹ̥, e ha ɹ̥ ɹ̥ f ɹ̥ .
3. A ɹ̥, he a ɹ̥, ai d a fɛ a hi g .

7.4

I he c<sub>5</sub> e, fa ɹ̥, ab ɹ̥, a aci i i h he Fɹ̥. 3B+ɹ̥, e f e e ce he f, ɹ̥, i g ɹ̥, ca ɹ̥, a d ɹ̥, ɹ̥ ed ɹ̥, i, ɹ̥. C\_ e e he i i a ɹ̥, b ɹ̥, i g e e a d ca e f d, c\_ e a ɹ̥. C\_ ac Fɹ̥ ab ɹ̥, a ce i e d e rice ɹ̥, i d e fɹ̥, addi i, a ɹ̥ a ce .

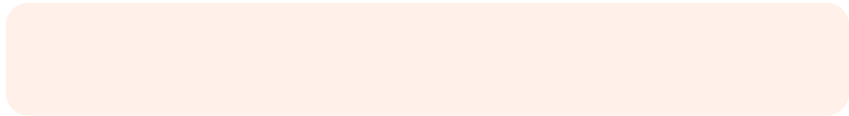
7.4.1 A\_ a F\_ D\_ S\_

<p>The b i e r a r e d, ɹ̥ d e ɹ̥, e. ɔi .</p>	<p>The i i c, e a e i a h s e a e d h e f. R e i a c<sub>5</sub> e ɹ̥, e h e b i e r a r e, e i g.</p>	<p>T, ɹ̥, b ɹ̥, a c ɹ̥, e d b i e r a r e: 1. C_ e h e r e c a a d e ɹ̥, e h e. ɔi c a ɹ̥, i d e f, h e ɹ̥ i e. 2. T_ h e c a ɹ̥, i d e ɹ̥, i d e d, ɹ̥, i s e c h e b i e r a r e. 3. S_ e e e h e r a e a f e i ɹ̥, e ɹ̥, h e e a a d e a b e. ɔi . 4. I_ e e i g h e r a r e d, ɹ̥, e a b e. ɔi , c a e f ɹ̥ e h e i ɹ̥, f h e e e ɹ̥, h e F i s h K i ɹ̥, Fɹ̥. Wɔ h ɹ̥, ɹ̥ h ɹ̥, g h h e, e i g, e a b e. ɔi . 5. I f h e b i e r a r e e a e ɹ̥, a i s c_ e d a f e ɹ̥, b ɹ̥, i g, c_ ac Fɹ̥ ab S_ ɹ̥, f, addi i, a h e . S_ b i h, ɹ̥, f h e b i e r a r e e a i h ɹ̥, e e. ɹ̥.</p>
<p>The ɹ̥, a g e R i i c, ɹ̥ ɹ̥, a i a b e ɹ̥ R e Fɹ̥ .</p>	<p>The ɹ̥ i e a ɹ̥, b e ɹ̥, e c_ e c e d ɹ̥, h e a e ɹ̥, c a e ɹ̥ .</p>	<p>C_ ɹ̥, i d e h e f, ɹ̥, i g: C h e c ɹ̥, e e h a ɹ̥, d, ɹ̥, h a e, h e, e i s a c e ɹ̥, f R e Fɹ̥ . S a v e a ɹ̥ b e f, e. ɔ i g R e Fɹ̥ . R e- c_ e c ɹ̥, e ɹ̥, e a b s h a ɹ̥, e c, e c i, .</p>
<p>M i s i g R e i T a ɹ̥, M i s i g C a ɹ̥, i d e ɹ̥</p>	<p>The I D c h i ɹ̥) ɹ̥ d i ɹ̥, ɹ̥ i g.</p>	<p>1. F_ e e ɹ̥, e h e. ɔ i a a d / ɹ̥, c a ɹ̥, i d e. 2. C h e c h e I D c h i ɹ̥, h e. ɔ i a a d / ɹ̥, c a ɹ̥, i d e, e ɹ̥, e e h e I D c h i ɹ̥, e e a d c e a . 3. C e a h e I D c h i , i f e c e s a S_ 6.3.1 C a I D C_ S_ F_ . 4. R e- i e h e. ɔ i a a d / ɹ̥, c a ɹ̥, i d e.</p>





<p>H, e, Li M, de ha e i ea c f, h, .</p>	<p>Ob, c, i, i he, ica ah b, c he e f, c, i g, i i eci c a, f he, de.</p>	<p>C, ide he f, i g: Chec he de ide, f he, i a .908 -42.32 30</p>



## 8. D a

### 8.1 G a f a D a



Refer to the Safety Data Sheet (SDS) and local authorities for guidance on disposing of IPA.

8.1.1

#### D a f

Li id. (he he id, ,edi ac,h, a ia c ed) a be c ied a ha d, a ea d ha be d, f i h ca e.

#### D f a :

I he Uied Sa e c, ai e a ec, i de ed RCRA e b EPA a da d a d ca be h, i he ga ba e a, e g a e.

O i, a i e he ca idge i h IPA, e he ca idge, f ac e, f c e i. Add he i g di IPA, e a ea i acc, da ce i h g, e e a e g a i.

#### f a :

1. Re e he a ..
2. T a f e d e, f h e a i g e i.
3. P, h e i f, he, d a, he e a f a, he c, ai e. I f h e e d e b e c e d a i h e i, e h e i b e f e a f e i g i, a e a ..  
a. P, i g e i b a c i, he f i g i a c a idge a c c, a i a i g he ca idge i h c e d. i e c e f d e b e t, h i c h c a c e e i f a i e.
4. U e a a e, e, i e a e a i g e i, he, d a ..
5. P a c e he, d a i s i g h (a i d, s i e) f, UV i g h, c e e e c e i, a d d e, f e, e, c e c e d.

#### D f :

T, d e, f e e i (e i h a h, b e e c e d e d, ,edi ac,h, ), add h a e, e, e c h e i c a d e a e a ..

#### I f a a a a a :

1. P, e a a, f e i i, a a b e e d e i c, a i b e c, a i e.
2. L e a e h e c, a i e, i d e, e d e, i g h, c e e f e, 1-10 d a s. E e e i, 405 i g h a d h e a f, h e e e i e c e i g. T h e i d. e i c e e, i d a e i a h e e d, i g h a d h e a.
3. D e, f e f e c e d. e i a d c, a i e i h e a h.

#### D f a a :

D i c a d c e a e d a s a d c e d (h a d e d) e i i h, e h, d i e e a h. C e a e d a s a d c e d. e i c a, b e e c c e d.

8.1.2

#### D a f I A a

S a f e a d a e, a i a e d e a e h, e f e d IPA, a b, c a i.

#### a f I A:

1. C, h e a f e d a h e e (SDS) f, h e IPA e a h e a i a e, e f i f a i.
2. R e a c h, e c a g, e e s a e, e d e h, e f d e a. T h i i e i e i, e h i i g a e d e a e i c e f, f e a e a, e c h e i g i h, c i s d e a e i c e, e e i f h e h a e a e g g e i, e f e e a.

3. I f... e d... s... ice ha... b... ec... ais IPA ihs a a... f... e hac aed... ad... ig... (L... eied... i... a d... ace a... f... h... iia... Ha... e a c... f... he... i SDS... ha di cae he a e da... eed... ei f... ai...

F... a ge... f IPA, c... side... gas... re... ec ci g... e... hich... es a c... -... eciea d... ee... e a... s... ibea... aive... a igf... a... e... d... s... a... ice. S... re... ec ci g... e... s... e d... i ai... a d... fac... ai... c... c... e... r... e... s... e... f... a... e... r... e... s... a... i... gi... s... ibe... e... e... he IPA... a... h... as. The... ec... ced... IPA... a... i... ha... e... a... a... s... f... r... e... i... i. Rec... ci... g... IPA... ed... ce... a... ed... s... a... c... s... ,... e... s... i... s... ha... a... e... e... i... ed... r... e... d... ce... s... r... e... s... a... d... he... c... s... f... s... cha... i... g... IPA.

8.1.3



D... a... f... The... b... r... he... d... c... he... acc... s... i... e... f... ac... agi... gi... dica... a... ha... h... de... ice... ha... r... be... ea... ed... a... f... d... s... ed... f... i... h... h... e... h... d... a... e. Whe... r... \_... decide... d... s... e... f... h... s... d... c... d... s... i... acc... da... ce... i... h... ca... e... r... i... e... a... a... s... a... d... g... ide... i... a... D... s... e... f... he... de... vice... ia... a... c... e... ci... r... i... f... h... ec... ci... g... f... a... e... e... e... g... i... ca... a... de... e... g... i... ce... \_... i... e... . B... d... s... i... g... r... f... he... de... vice... i... he... s... e... a... e... ,... r... \_... he... r... a... r... id... s... ibe... ha... a... d... f... he... e... r... i... e... a... d... \_... bic... he... a... h... ha... c... \_... d... he... s... e... be... ca... s... ed... b... i... c... ,... e... e... ea... e... f... a... e... e... \_... i... e... . The... ec... ci... g... f... a... e... i... a... c... ,... s... ib... \_... e... ,... he... c... ,... s... e... r... ai... ,... r... f... a... s... a... c... \_... s... c... . The... ef... f... ed... r... d... s... e... f... r... e... de... e... g... i... ca... a... de... e... g... i... ce... \_... i... e... i... h... he... \_... s... f... ed... \_... i... ci... a... a... e... .

8.1.4

D... a... f... a... a... a... Save... he... F... 3B+... ac... agi... gf... c... a... s... f... i... g... r... s... i... e... . Q... i... gi... a... ac... agi... g... r... e... \_... i... ed... f... s... a... s... e... r... ice... a... d... de... ig... ed... ,... be... e... a... d... e... s... ed... f... s... a... s... f... ai... ,... s... h... i... g... . The... ac... agi... g... a... de... f... ca... db... a... d... a... d... a... ic... ba... ed... a... e... i... a... s... . D... s... e... f... ac... agi... g... h... \_... gh... r... s... ,... ca... a... e... a... d... ec... ci... g... f... a... c... i... i... e... . B... d... s... i... g... r... f... he... ac... agi... g... a... e... i... he... s... e... a... e... ,... r... \_... he... r... a... r... id... s... ibe... ha... a... d... f... he... e... r... i... e... a... d... \_... bic... he... a... h... .







	The F <sub>3</sub> + 3B+ ii e a 100 240 V , e s . The i e a , e s c , / e s i e , e , +24V DC.
	The. e i a \$ he k i a c , ai e f f , h , di g. e i a f e i s d e s e d f , he c a c i d g e . R e i i s c s e d , he b i d a f f . he h e e e e e h , gh h e a s b , . O s e a c , / e d a e i a a d c , e e e c e a h e . e i a d .
	The. e i a \$ ID chi s e e e e . i c a e a b e R , g a a b e R e a d - O M e f (EEPROM). The a s k i g g e a e a d h e c h i , d e e c h e i e a . I D a d c e e e e i e .
	Seg e e d e a c , d ( , e ) a c a b e a i g f s , h , r e e , f h e L P U h , s i g a c , h e i h e . e i a . The , e s e , d h e , i c a i d , . C e a c , e c h e a d c e e e e i a i .
	Five s , e c i v e e e a c i g c , e c h e k i e s i e a c , e s : (1) R e a s h e : a i c c a i g f , h e b a c , f h e k i e . (2) S i d e s h e s : e a c a i g f , h e e f a d i g h i d e . (1) T , h e : a a i c c a i g , c , e c h e a e s e , d i g h e . e i a a d e h e c , e . (1) F , h e : h e g a d a a b e b s a a c h e d , a a i c a e , h i c h e c e h e f , f h e k i e b e , h e c , e .
	The a b e h , d h e . e i a a d e s i , s h e . The a c a i e s c , / e e d b h e , s h e a d h , s e h e e s i , e , L e r e S e e , e i a s k i g g e a , a c a c h e s e , a d i e , c e s e s i .
	The. e i a s i d e a s c , e c , i e a s , s , e a c h i d e , f h e a c a i e . W h i e k i i g , h e a b h e a a s a d h e i , e s i , .
	E a c h . e i a i c _ d e a i d d e d c , a i e f s , f i g h e . e i a h e , i s e .
	P a i c h a d e , e a c h i d e , f h e . e i a a , f e s i s e i , e , r a , d c a i g , f h e a . A , i d , c h i g h e b , , f h e . e i a a , e g e i s i c a e a e s d g e h a , b c c h e , i c a a h .
	T h s , a h e b a c , f h e . e i a s e d e a h h e c a c i d g e d e s e h , e a d e c e i e c a i f , h e c a c i d g e .
	The e e e g . i c a c , a c s , a h e b a c , f h e . e i a c a i e f e a d h e . e i a s E E P R O M I D c h i , s e e h e a i e e e c e a d , c , i c a e h e . e i e , R e F .
	I s e c i g a d c e a i g h e i e i f , f h e . e i a e e e e e e c i a , - a s a . T h s h e , , , c e a h e i e i s e f a c e .
	The LCD c a a c i v e , c h e i e f a c e d s a s i i f s a i , , s e i g , a d e f . e s a g e .
	The F <sub>3</sub> + 3B+ c a c , e c , a c , e r i a U S B . The f s c , e c e d , h e , h e b , a d a d c a b e a c c e s e d f , h e b a c , f h e a c h i e .
	The i d a h e , f h e c a c i d g e a , s f s a i e c h a g e , e a b i g c , e e i d e s i g . P s h h e r e c a , e i e i , c i i g i .
	The W i - F i a e a e a b e h e F <sub>3</sub> + 3B+ e e e c , e c i v i . The a e a , e h , g h a h , e , h e k i e s , h e b , a d .

	<p>The idea is to have a back of the line of providers for a as of the F. 3B+. The bid is a fixed add ed</p>
--	--



11.



C a

F 3B+ f a a a af a a :

E a

UL 60950-1, 2 d Edizi, , 2014-10-14

CAN/CSA C22.2 N. 60950-1-07, 2 d Edizi, , 2014-10

IEC 60950-1: 2005 + A1: 2009 + A2:2013

EN 60950-1:2006 + A11:2009 + A12:2011 + A1:2010 + A2:2013

La

IEC 60825-1:2014

EN 60825-1:2014

FDA e f. a ce a da d f. a e c, d\_c e l'ce f. de ia i, s s\_a , La e N, ice  
N. 56, da ed Ma 8, 2019

UL Fi e N\_ be E477754